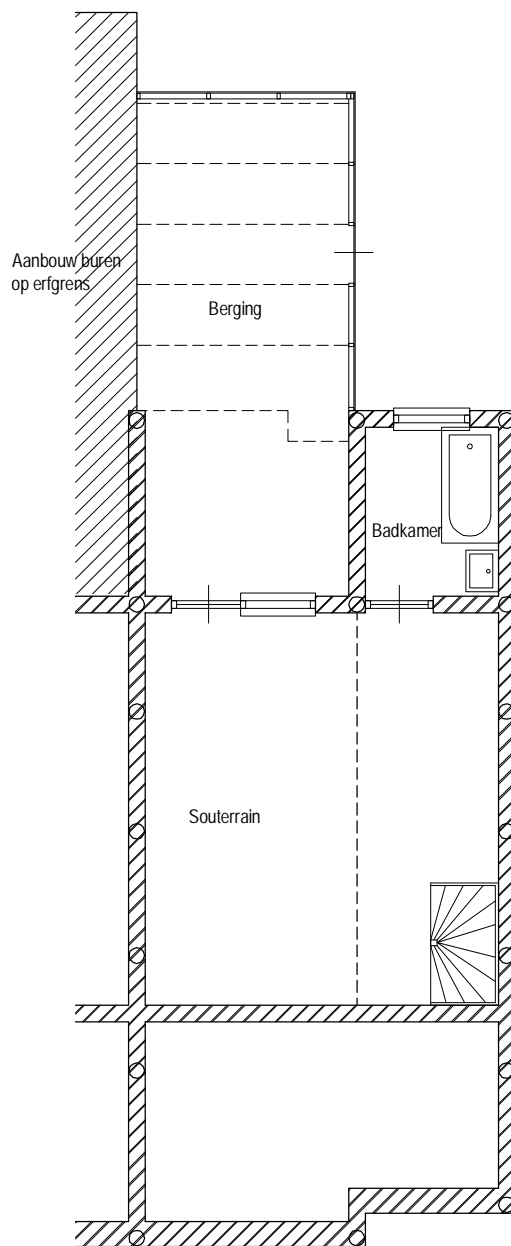
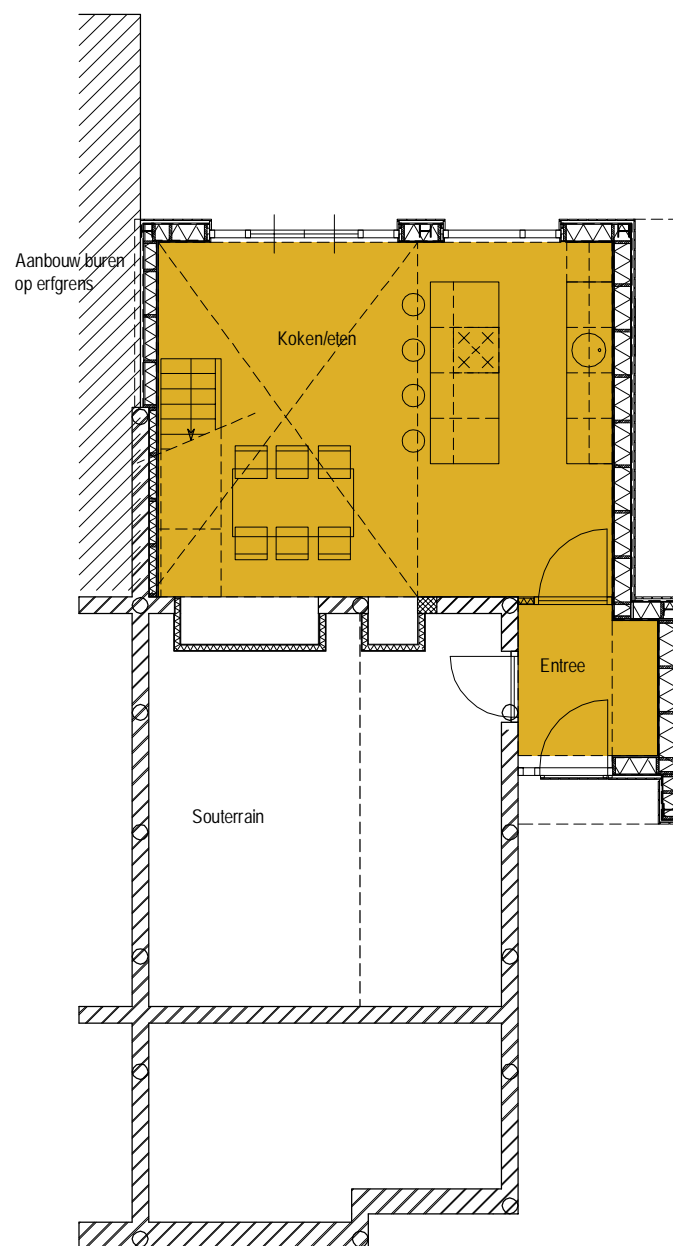


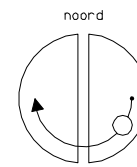
Ontwerp verbouw en uitbreiding woonhuis
Rotterdam met verduurzamingsmaatregelen



Plattegrond Souterrain
bestaand 2060-



Plattegrond Souterrain
Nieuw 2060-
GBO +31,79 m²

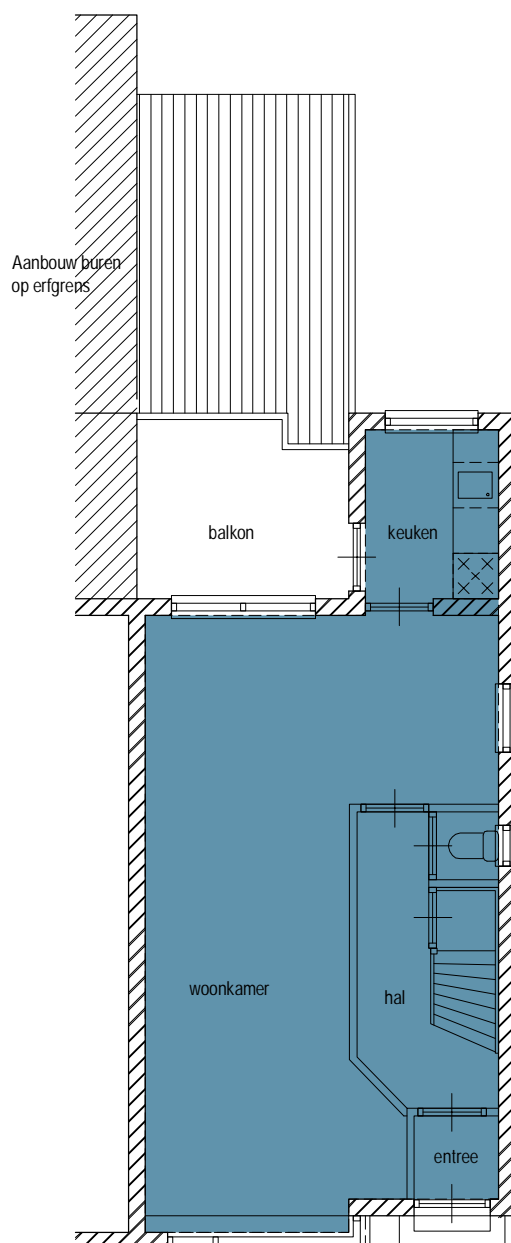


GBO bestaand woonhuis:

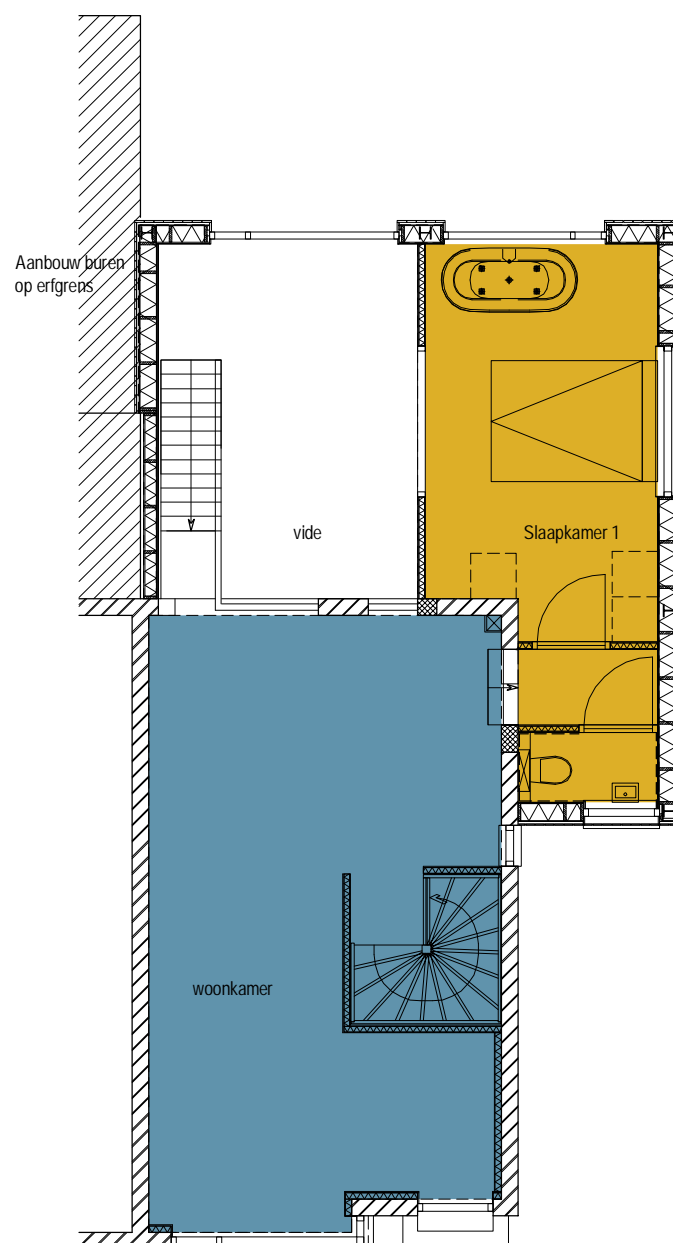
| | |
|------------|----------------------|
| Beg. Grond | 41,88 m ² |
| Verd. 1 | 33,75 m ² |
| Verd. 2 | 8,58 m ² |
| Totaal: | 84,21 m ² |

GBO uitbreiding:

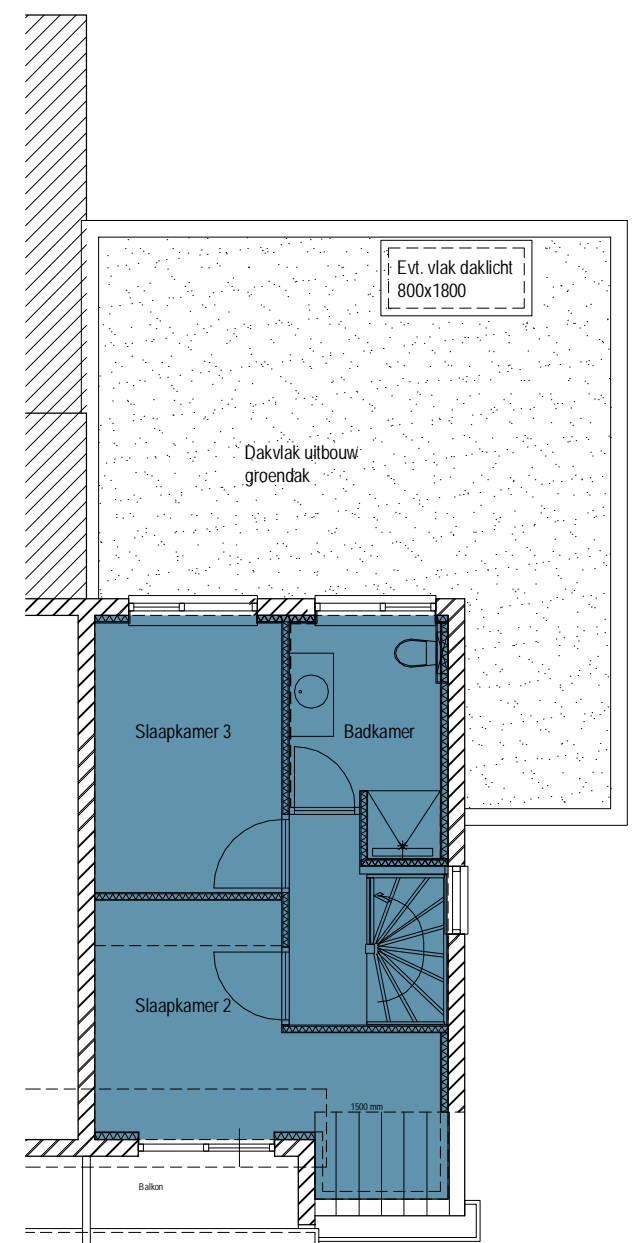
| | |
|------------|----------------------|
| Souterrain | 31,79 m ² |
| Beg. Grond | 19,33 m ² |
| Verd. 2 | 12,50 m ² |
| Totaal: | 63,62 m ² |



Plattegrond Begane Grond
bestaand P= 0.00
GBO 41,88 m²



Plattegrond Begane Grond
Nieuw P= 0.00
GBO +19,33 m²



Plattegrond Verdieping 1
Nieuw 3060+
GBO 33,75 m²

Evt. vlak daklicht
800x1800

Dakvlak uitbouw
groendak